



# Board SMT to Cable

.050"

9 thru 51 Contacts

Rugged Metal

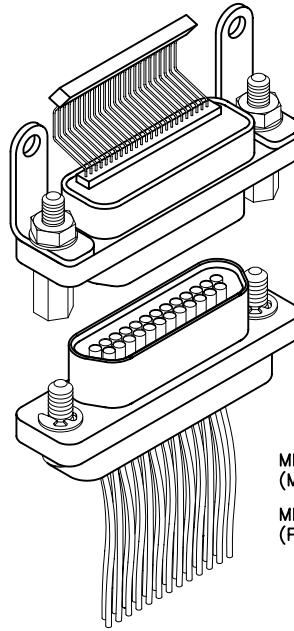
**MM**

Rugged Plastic

**MN**

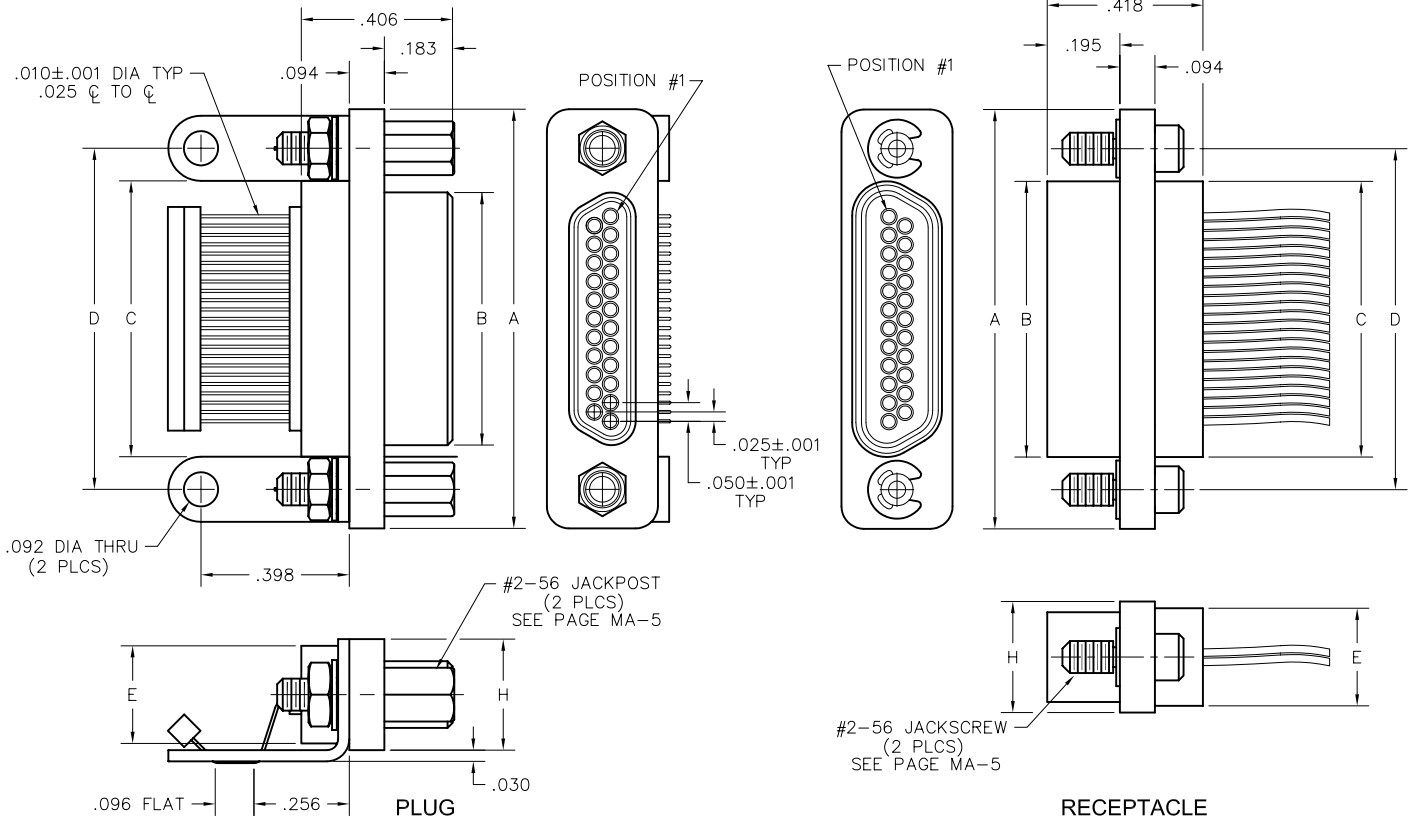
MM-212-025-175-320S  
(METAL)

MN-211-025-175-320S  
(PLASTIC)



MM-222-025-261-41WQ  
(METAL)

MN-221-025-261-41WQ  
(PLASTIC)



SIZE	CONTACT ROWS	DIMENSIONS							
		A	B		C	D	E	H	HARDWARE
			PLUG MAX	RCPT MAX					
9	2	.775	.334	.400	.390	.565	.270	.298	#2-56 UNC THD (.092 DIA THRU)
15		.925	.484	.550	.540	.715			
21		1.075	.634	.700	.690	.865			
25		1.175	.734	.800	.790	.965			
31		1.325	.884	.950	.940	1.115			
37		1.475	1.034	1.100	1.090	1.265			
51*		1.825	1.384	1.450	1.440	1.615			

\* = 51 POSITION CONNECTORS ARE AVAILABLE IN METAL ONLY.

**PLUG:** MM-212-025-175-320S  
**RECEPTACLE:** MM-222-025-261-41WQ  
**PLUG:** MN-211-025-175-320S  
**RECEPTACLE:** MN-221-025-261-41WQ  
 XX-XXX-XXX-XXX-XXXX-XXX

**PLUG**

**RECEPTACLE**

**SERIES**

MM .050" Rugged Metal PC Board Mount, SMT Connector MN .050" Rugged Plastic PC Board Mount, SMT Connector (MM & MN mate with MK, ML, MM, MN receptacles)	MM .050" Rugged Metal I/O Connector MN .050" Rugged Plastic I/O Connector (MM & MN mate with MK, ML, MM, MN plugs)
--	--

**BODY**

2 2-Row (Sizes 9 thru 51***)  <b>BODY STYLE:</b> 1 Plug, straight, with ears  <b>BODY MATERIAL:</b> 1 Polyphenylene Sulfide (MN only) 2 Polyphenylene Sulfide with electroless nickel shell 3 Polyphenylene Sulfide with electrodeposited cadmium shell <input checked="" type="checkbox"/> 4 Polyphenylene Sulfide with hard anodized black shell 5 Polyphenylene Sulfide with stainless steel shell	2 2-Row (Sizes 9 thru 51***)  <b>BODY STYLE:</b> 2 Receptacle, straight, with ears  <b>BODY MATERIAL:</b> 1 Polyphenylene Sulfide (MN only) 2 Polyphenylene Sulfide with electroless nickel shell 3 Polyphenylene Sulfide with electrodeposited cadmium shell <input checked="" type="checkbox"/> 4 Polyphenylene Sulfide with hard anodized black shell 5 Polyphenylene Sulfide with stainless steel shell
---	---

**SIZE**

XXX 009, 015, 021, 025, 031, 037, 051\*\*\* | XXX 009, 015, 021, 025, 031, 037, 051\*\*\*

**CONTACTS**

<b>TYPE CONTACTS/TERMINATIONS:</b> 17 Pin, Surface Mount  <b>PLATING OPTIONS:</b> 5 50 μ" Au contacts; Sn/Pb alloy terminations <input checked="" type="checkbox"/> 8 50 μ" Au contacts; Sn plated terminations	<b>TYPE CONTACTS/TERMINATIONS:</b> 21 Socket, straight, solder cup 24 Socket, straight, .500" pigtails (.018 dia) 25 Socket, straight, 1.000" pigtails (.018 dia) 26 Socket, straight, crimped wire  <b>PLATING OPTIONS:</b> 1 50 μ" Au contacts (crimp wire) 3 50 μ" Au contacts; 10 μ" Au terminations (solder cup, pigtail) 5 50 μ" Au contacts; Sn/Pb alloy terminations (pigtail) <input checked="" type="checkbox"/> 7 50 μ" Au contacts; SAC305 terminations (pigtail)
--	---

**HARDWARE**

<b>STYLE OF HARDWARE:</b> 00 None 32 Two fixed jacknut assemblies with mounting bracket 46 Two turning jackscrews, allen head, captivated** with mounting bracket  <b>POLARIZATION / WIRING:</b> 0R Reverse Body Polarization 0S Standard Body Polarization	<b>STYLE OF HARDWARE:</b> 00 None 22 Two fixed jacknut assemblies 41 Two turning jackscrews, allen head, retaining ring 42 Two long turning jackscrews, allen head, retaining ring 43 Two turning jackscrews, slot head, retaining ring 44 Two long turning jackscrews, slot head, retaining ring 45 Two turning jackscrews, allen head, captivated**  <b>POLARIZATION / WIRING</b> 00 None XX For wiring codes, see page MA-3 & MA-4
--	--

**OPTIONS**

| 900 Interfacial sealing gasket

\*\* = Captive hardware is factory installed and non-removable.  
 \*\*\* = 51 position connectors are available in metal only (non Mil-Spec interface).  
 = Option not RoHS compliant