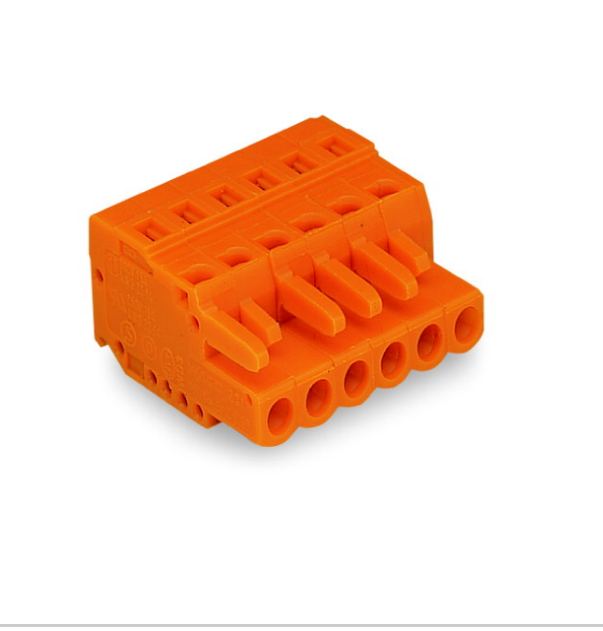




Item (Detail view)

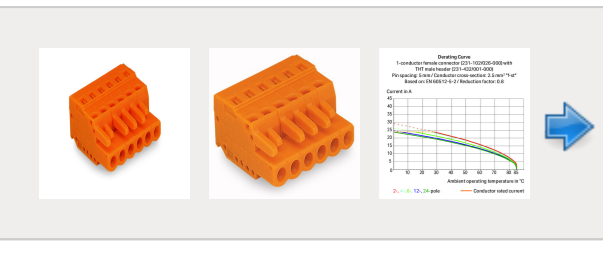
1-conductor female plug; 2.5 mm²; Pin spacing 5.08 mm; 6-pole



Item no.	231-306/026-000	GTN / EAN	4044918348719
Content	1 piece	Order unit	piece
Order quantity	50 piece	Increase in order quantity	(50, 100, 150, 200, ...)
Customer item no.		Customs Tariff no.	8536909090
Customs duty for the country of origin	DE	Available	-
List price	On request	Net price	On request
Availability	On request		

Note: Some items may not be available from your local WAGO company. Please note that the quantities ordered in the shopping cart are rounded up to the PU (SPU).

RoHS Compliant



Article details Approvals Downloads/Certificates Accessories

Description 1-conductor female plug; 2.5 mm²; Pin spacing 5.08 mm; 6-pole

Remarks

Item description:

- Universal connection for all conductor types
- Easy cable pre-assembly and on-unit wiring via vertical and horizontal CAGE CLAMP® actuation
- Integrated test ports
- Coding option available

Safety information 1: The MULTI CONNECTION SYSTEM (MCS) is designed without breaking capacity for compliance with DIN EN 61984. When used as intended, MCS Connectors shall not be connected/disconnected when live or under load. The circuit design should ensure header pins, which can be touched, are not live when unmated.

Item properties

Miscellaneous		
Name	Value	Unit
Other versions (or variants) can be requested from WAGO Sales	Gold-plated or partially gold-plated contact surfaces	
Connection technology	CAGE CLAMP®	
Actuation type	Operating tool	
Solid conductor	0.08 ... 2.5 mm ² / 28 ... 12 AWG	
Fine-stranded conductor	0.08 ... 2.5 mm ² / 28 ... 12 AWG	
Fine-stranded conductor with ferrule with plastic collar	0.25 ... 1.5 mm ²	
Fine-stranded conductor with ferrule without plastic collar	0.25 ... 2.5 mm ²	
Strip length	8 ... 9 mm / 0.31 ... 0.35 inch	
No. of poles	6	
Total number of connection points	6	
Total number of potentials	6	
Number of connection types	1	
Number of levels	1	
Pin spacing	5.08mm (0.2 in)	
Width	31.98 mm / 1.259 in	
Height	14.3 mm / 0.563 in	
Depth	26.45 mm / 1.041 in	
Contact type (pluggable connector)	Female connector/socket	
Connector connection type	for conductors	
Mating protection	No	
Color	orange	
Material group	1	
Insulating material	Polyamide 66 (PA 66)	
Flammability class per UL94	V0	
Clamping spring material	Chrome nickel spring steel (C-Ni)	
Contact material	Copper alloy	
Contact plating	Sn-plated	
Fire load [MJ]	0.158	MJ
Weight [g]	11.065	g
Limit temperature range	-50 ... 85 °C	
Packaging type	BOX	
[mm]	31.98	mm
Pin spacing from [in]	0.2	in
Pin spacing from [mm]	5.08	mm
Contact type	Female connector/socket; for conductors	
Product Family	MCS MCS Classic	
Main product function	Female connector/socket	
Product type	Pluggable PCB connectors	

Upwards